

Micro Sprayers

Multi-head micro sprinkler on spike | model 8855-1GB



Pre-assembled with a spinner for 360° of coverage, and interchangeable spreader insert heads are included in the package for 90°, 180° and strip patterns.

Features

- Recommended for vegetable gardens, seedlings, flowerbeds, groundcovers and under tree canopies
- The spinner/rotor can be replaced with a 90°, 180° or strip-spray-pattern spreader for a range of applications
- Double-frame design provides balanced coverage with high uniformity
- Easy to dismantle, clean and assemble
- Press-fit configuration for easy maintenance
- The spinner/rotor is balanced between the micro sprinkler's double frame and the nozzle, providing gentle and even uniformity
- Strong propulsion of the spinner/rotor at low pressure for even uniformity
- Available completely assembled on a 13 in. spike with 24 in (.160 ID x .270 OD) micro tubing and a barb
- Excellent performance with uniform water distribution
- Large water passage, low flow rate, no misting



DIG Corporation

1210 Activity Drive
Vista, California 92081
www.digcorp.com

800. 322.9146
760. 727.0914
fax 760. 727.0282



Micro Sprayers

Multi-head micro sprinkler on spike | model 8855-1GB

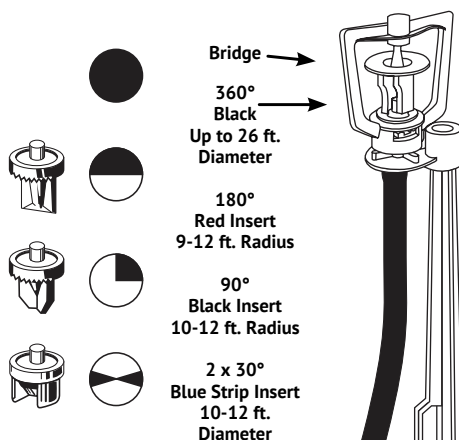
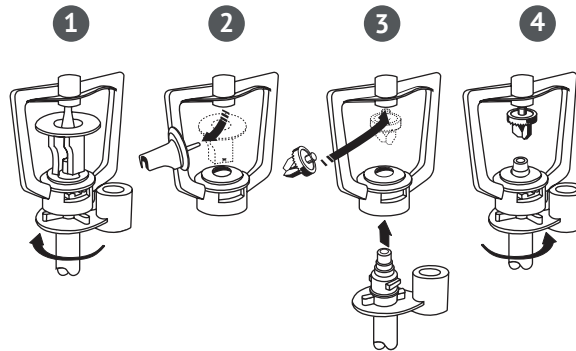
Designed for large diameters (up to 25 ft. full circle). Can be used on flowerbeds, trees, groundcover, slopes or for seed germination. Flow rate 18.3 GPH at 15-25 PSI.

Recommended spacing 12 ft. to 15 ft. Up to 10 micro sprinklers may be used on the same 1/2 in. poly tubing line with 25 PSI. The slow, uniform application of small droplets makes DIG micro sprinklers the ideal method to achieve deep watering with reduced runoff and evaporation loss.

To change insert, hold frame stationary and:

- 1) Remove green nozzle by turning counter clockwise
- 2) Remove black spinner
- 3) Push the top post of the desired insert into hole under top section of bridge
- 4) Replace green nozzle

Note: 180°, 90° and Strip Spray inserts are stationary and do not spin.



Installation:

Punch hole in the 1/2 in. poly tubing and snap the barb on the end of the micro tubing into the 1/2 in. poly tubing. It is recommended to mount the micro sprinkler a minimum of 8 in. above the ground.