

LEIT 4000 USB UPDATER

The LEIT 4000 is now supplied with a convenient USB port in order for your controller to be kept up to date with new software versions.



Before attempting to update to the most recent software version on your LEIT controller, first check to see if your controller has the current software installed. Visit the link: www.digcorp.com/LEIT4000update to see the current version. Next check your controllers software version by inserting the LEIT key into the controller then press Yes until you get to the software version screen:

SW Ver X.XX
EE Ver X.XX

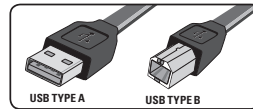
If the software version differs from what is online, then an update is available.

***This update requires a standard USB cable with a type A and type B connectors (not included).**

Supported operating systems:

- Windows 7
- Windows Vista
- Windows XP
- Windows 2000

*At this time Apple OSX is not supported.



- Step 1** Open your browser (i.e. Internet Explorer, Firefox, Chrome, etc) and type in the address www.digcorp.com/LEIT4000update and download the LEIT-4000-USB-Update-XXX.zip file.
- Step 2** After the file has completed downloading, unzip it.
- Step 3** If this is the first time this computer will be used to update the LEIT 4000 you must also download the LEIT-4000-USB-Drivers.zip file and install the drivers. If the drivers have previously been installed on this computer then skip to Step 6.
- Step 4** After the drivers file has completed downloading, unzip it.
- Step 5** Open up the unzipped LEIT-4000-USB-Drivers folder.
1. For Windows 2000 computers, double-click to run the LEIT 4000 USB Drivers W2K.exe file.
 2. For all other supported version of Windows, double-click to run the LEIT 4000 USB Drivers.exe file.
- IMPORTANT NOTE: you must have Administrator privileges to install the new drivers on your computer.
3. For Windows 7 computers, right click on the LEIT 4000 USB Drivers.exe file and select Run as Administrator.
- Step 6** Open up the unzipped LEIT-4000-USB-Update-XXX folder and double-click to run the LEIT 4000 USB Update XXX.exe file, where the new version XXX is the version to be installed. If you have any questions please call us at 1-800-322-9146 or 760-727-0914.

Step 7 Follow all instructions on screen to complete the update process of your LEIT 4000 controller (see Figure A). After the update process is complete, disconnect the USB cable (see Figure B).

Note: If the LEIT 4000 is installed, use a laptop to update the controller in the field.

FIGURE A

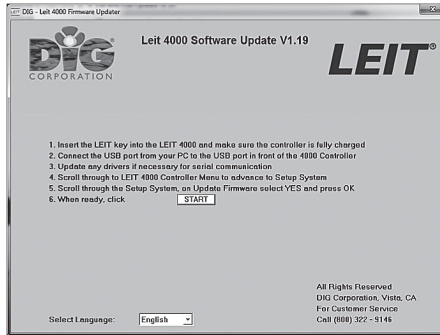


FIGURE B

